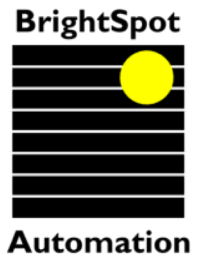
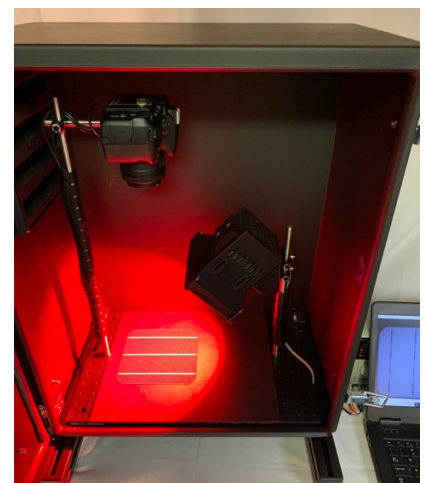
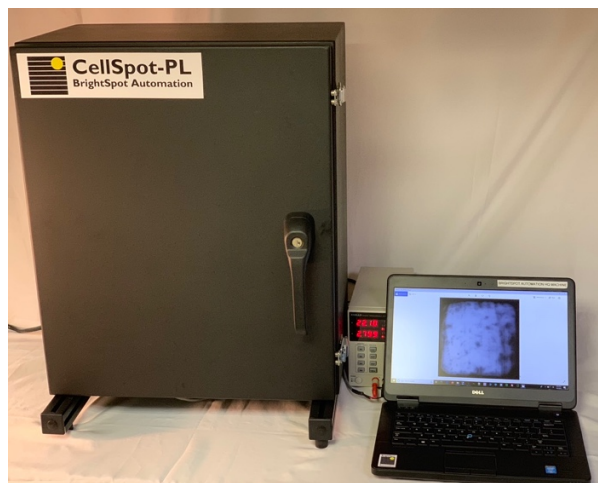
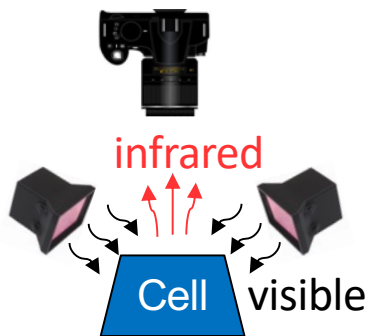
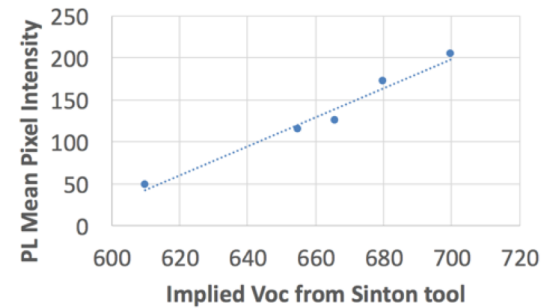


# CellSpot-PL



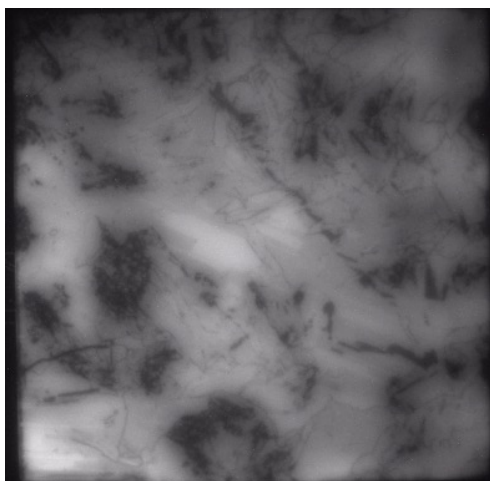
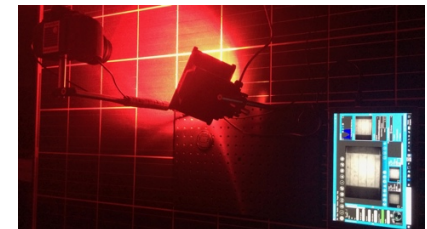
## Budget-Priced PL System

- 1 or 2 Photoluminescence Light Sources
- Power Supply for Light Sources
- EL-PL Camera with Filters
- Nest for Samples up to 25cm x 25cm
- Lightproof Enclosure
- Laptop with Average and Stdev Analysis Software
- Good correlation to *i*Voc

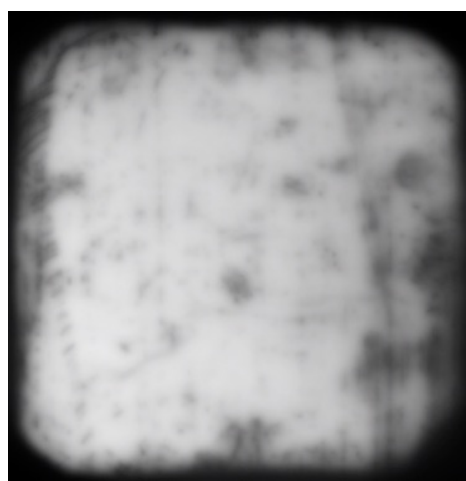


## Photoluminescence Light Source

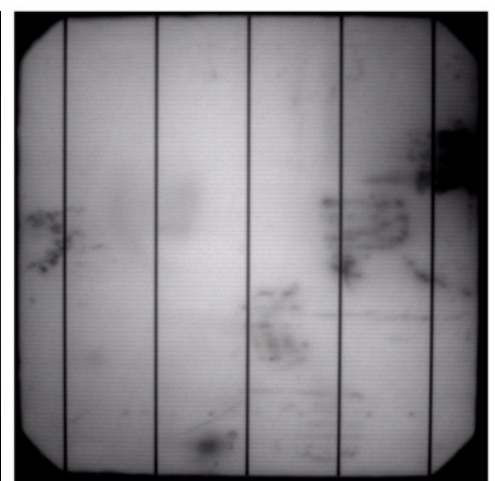
- Visible LED Light Source – No Safety Risk from IR Lasers
- Filtered to Remove IR “Noise”
- Variable Intensity up to 1/3 Sun



Multi Wafer



Mono Wafer



Mono Cell